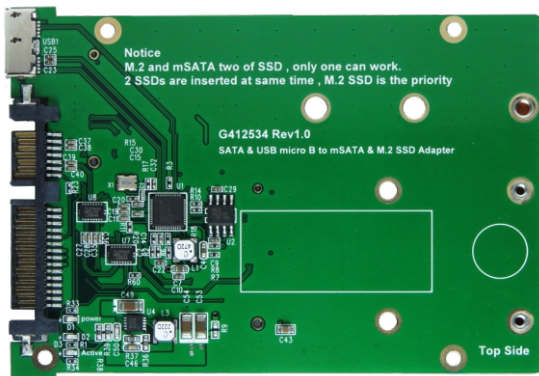
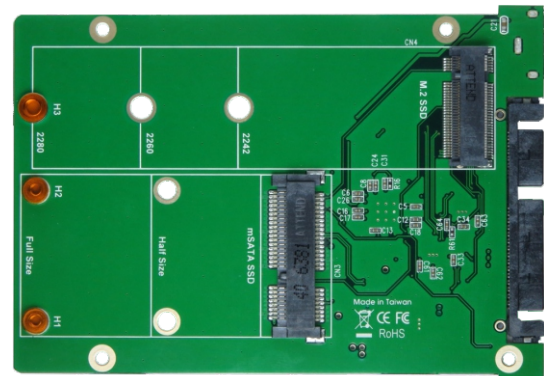


USB 3.1 micro B & SATA III to mSATA & M.2 SSD



Top side



Bottom side

Features

- ✘ Built in ASM1351 USB 3.1 Gen2 high performance processor
- ✘ M.2 SSD (SATA interface) to USB 3.1 / 10Gbps & SATA Converter
- ✘ mSATA SSD to USB 3.1 / 10Gbps & SATA converter
- ✘ Built in micro B Female connector
- ✘ Built in SATA 7+15pin Female connector
- ✘ Built in mini PCI-e Female connector
- ✘ Built in M.2 B-key Female connector
- ✘ PWM synchronous buck converter Power IC
 - ⊙ 3A maximum output current
 - ⊙ Short circuit protection
 - ⊙ In-rush current suppression
 - ⊙ Thermal shutdown protection
 - ⊙ ESD HBM (Human Body Mode) / 2KV
- ✘ D1 Green LED on indicates SSD power ready
- ✘ D3 Red LED Blinking indicates SSD active status

Specifications

- ✘ Compliant with USB 3.1 Specification Revision 1.0
- ✘ Support UASP and Mass Storage Class Overview Rev1.1
- ✘ Support SATA Reversion 3.2
- ✘ Compliant with PCI Express M.2 Specification Version 1.0
- ✘ PCI Express Mini Card Electromechanical Specification 2.0

mSATA SSD Form Factor Support :

- ✘ Full size: 50.95 mm (L) x 30mm (W)
- ✘ Half size: 26.8 mm (L) x 30 mm (W)

M.2 SSD Form Factor Support :

- ✘ Type 2242-D2-B-M:42mm(L) x 22mm(W)
- ✘ Type 2260-D2-B-M:60mm(L) x 22mm(W)
- ✘ Type 2280-D2-B-M:80mm(L) x 22mm(W)

*Notice 1 : internal M.2 SSD or mSATA SSD, only one can work, M.2 SSD would be priority.
 Notice 2 : external USB 3.1 micro B or SATA, only one can work, SATA ould be priority.*